

BETTER WELDING STARTS WITH THE RIGHT SETUP

A clear, practical guide to the consumables used at every stage of the welding process, from start to finish.

NEW!

Order online at euromarc.co.nz

Inside you'll find:

New products
added to the range!

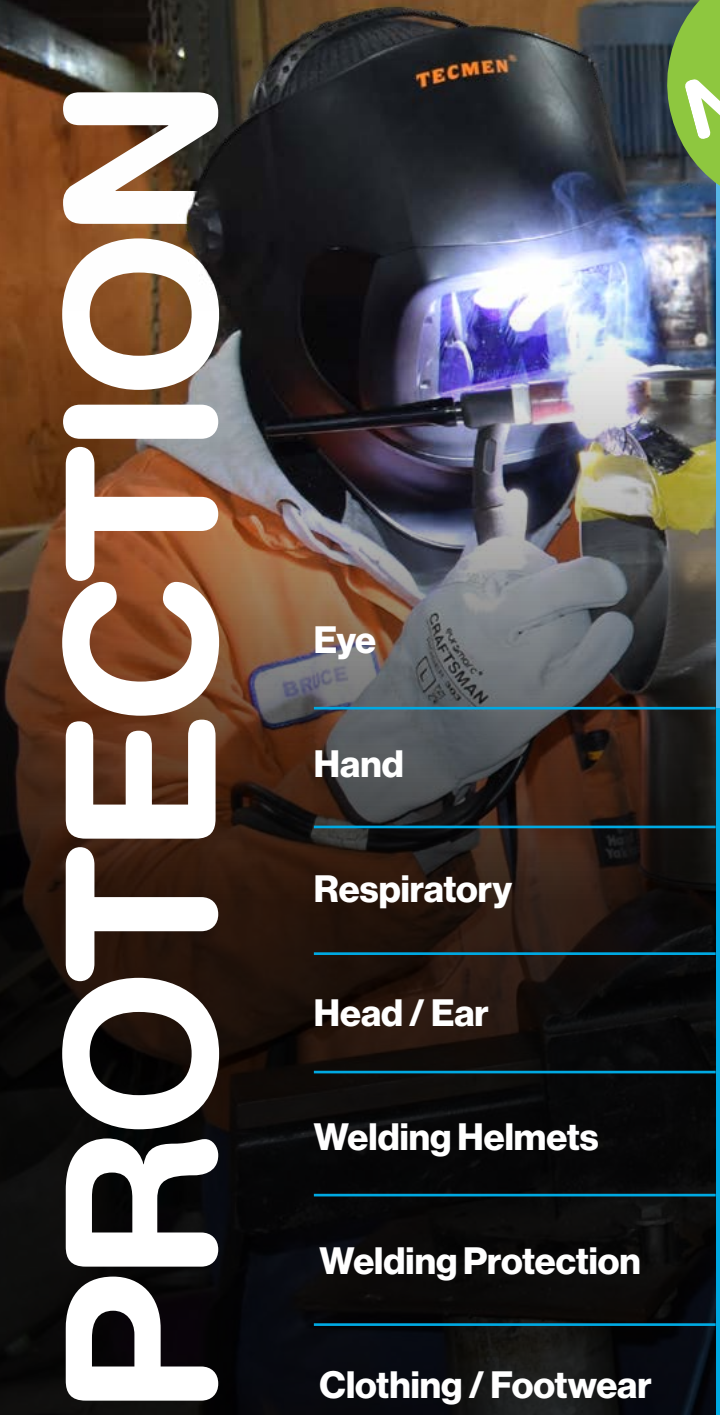
Welding consumables
for each stage

Everyday workshop
essentials

Order online at euromarc.co.nz | 0800 278 600 | sales@euromarc.co.nz

euromarc[®]
So Quick. So Easy

PROTECTION



NEW!

Eye

Hand

Respiratory

Head / Ear

Welding Helmets

Welding Protection

Clothing / Footwear



eur marc
CRAFTSMAN
EAR PLUGS **202**



Earplugs

- Bullet shape for a comfortable, secure fit
- Expands gently for all day wear
- Class 5, 27 dB protection
- Helps reduce noise in high exposure areas
- Corded and non corded options available
- AS/NZS 1270:2002 safety standards



eur marc
CRAFTSMAN
WELDING JACKET **175**



Welding Jacket

- Full leather protection with up to 40% reduced weight
- Off set front reduces wear
- Hook and loop closure for comfort
- Extended back for better protection
- Premium A grade cowhide leather
- Kevlar stitching for longer life
- Sizes Medium to 3XL



euromarc
CRAFTSMAN
MIG
WELDER **311**



MIG Leather Glove

- Premium cowhide leather with reinforced palm and thumb
- Fully lined for comfort and longer wear
- Kevlar stitching to withstand high temperatures
- Built to EN388 and EN407 standards
- 400 mm length for added protection
- Sizes Medium to XL



euromarc
CRAFTSMAN
TIG
WELDER **309**



TIG Welder Glove

- Supple leather for comfort and precise control
- High dexterity with reliable heat resistance
- Kevlar stitching for seam strength
- Built to EN388 and EN407 standards
- Sizes Large to 2XL



euromarc
CRAFTSMAN
MIG
WELDER **315**



MIG Glove Aluminized

- Reflective Kevlar back helps deflect heat
- Extends glove life in high heat areas
- Reinforced cowhide palm and thumb
- Kevlar stitching to withstand high temperatures
- Built to EN388 and EN407 safety standards
- Size Large



euromarc
CRAFTSMAN
WELDER'S
HOOD **162**



Welder's Hood

- Made with lightweight, cool cotton
- Flame resistant
- Easy to wear Velcro opening
- Sewn with Kevlar thread
- Universal size



euromarc
CRAFTSMAN
WELDER'S
SLEEVES **155**



Welder's sleeves

- Made with leather and flame-resistant cotton
- Lightweight with heavy-duty protection
- Elastic ends allow easy movement and fit
- Kevlar stitching improves durability
- 470 mm length gives full arm coverage



euromarc
CRAFTSMAN
WELDER'S
APRON **153**



Welder's Apron

- Premium split cowhide blue leather for durability
- Doesn't shed fibres like standard grey leather
- Resists aging and hardening
- Kevlar stitching with riveted stress points
- Adjustable straps and utility pocket
- 700x1000mm gives chest to knee protection

PREPARATION

Cutting

Grinding

Fibre

General

Gouging Rods



euromarc
ELITE
WELD
ANTI-SPLATTER **210**



Weld Anti Spatter

- Stops weld spatter sticking before it starts
- Water based, clean and easy to use
- Safe for galvanising or painting immediately after use
- Helps reduce cleanup and save time
- Available in 500 ml, 4 L, and 20 L

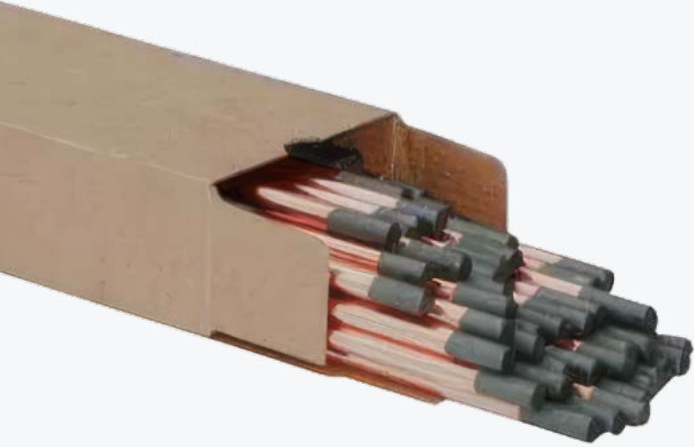


euromarc
ELITE
PAINT
MARKER PEN **208**



Permanent Paint Marker Pen

- Writes clearly on oily, wet, or coated surfaces
- High visibility paint with quick dry finish
- Works on all metals, including stainless and alloys
- Xylene free for safer use
- Temperature range -46°C to 66°C



euromarc®
ELITE
 GOUGING ROD **793**



Gouging Rod

- Standard round DC series
- Operates on DC welding power source
- Requires air arc gouging torch with compressed air supply
- Pack of 50



euromarc®
ELITE+
 THIN CUTTING **911**



ELITE+ Thin Cutting 911

- Sharp grain for fast, cooler cutting
- Long life with fewer disc changes
- Ceramic and zirconia mix for durability
- Precise, straight cuts using latest pressing technology
- Reinforced for strength and safety
- Inox formula for all steels, including stainless



euromarc®
ELITE
 GRINDING **933**



ELITE Grinding 933

- Tripple layer reinforcement of the abrasive grain
- Safe to use on stainless or carbon steels
- Non-glazing on all metals
- Large, layered grain helps with fast stock removal
- Moderate pressure is preferred when applying to workpiece



Abrasives Professional
DEERFOS



Bora9 Ceramic Fibre Disc

- Ceramic grain for aggressive, cool cutting
- Long life with fewer disc changes
- Top coating reduces clogging and heat build up
- Maintains sharp cutting performance
- Thicker backing for heavy grinding strength
- For use on steel, stainless steel, and aluminium
- Available in grits 36, 60, 80, and 120

Order online at euromarc.co.nz | 0800 278 600 | sales@euromarc.co.nz



WASP Weld Anti Spatter Spray

- Prevents spatter buildup on surfaces and equipment
- Protects nozzles, torches, jigs, and fixtures
- Helps maintain arc stability and extend nozzle life
- Suitable for steel, stainless, aluminium, and alloys
- Non flammable and silicone free
- MPI C12 approved

Your most-used products should always be 1 click away.



Set up your QuickOrder favourites list in 3 easy steps:

1. **Login** at euromarc.co.nz
2. **Search** for the items you use often
3. **Click** "Add to QuickOrder"

Enjoy **3x faster ordering** with **no need to search for your favourite products everytime.**



Login to order online & check trade pricing

So Quick. So Easy 7

NEW!

Electrodes Range

Login to order online
& check trade pricing

WELDING

MIG Wire

TIG Wire

Binzel

Tregaskiss

Tweco

Bernard

Electrodes

Accessories



euromarc
ELITE
ELECTRODE **747**



Stainless Steel Electrode - E316L-16

euromarc
ELITE
ELECTRODE **745**



Stainless Steel Electrode - E309L-16

euromarc
ELITE
ELECTRODE **741**



Stainless Steel Electrode - E308L-16

euromarc
ELITE
ELECTRODE **705**



Low Hydrogen Electrode - E7016-1



euromarc
ELITE
ELECTRODE **709**



Low Hydrogen Electrode - E7018-1



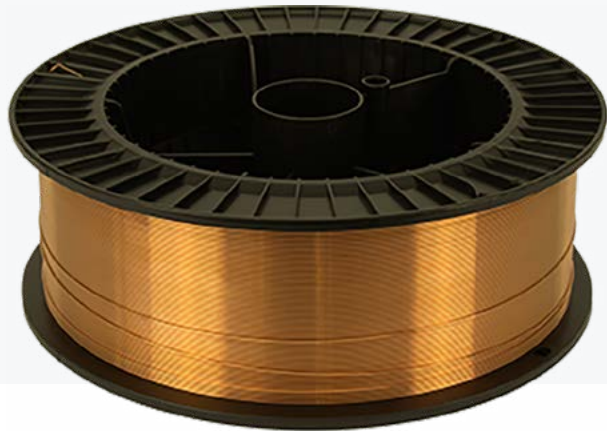
euromarc
ELITE
ELECTRODE **701**



GP Blue Flux Electrode - E6013

Mild Steel Wires

Login to order online
& check trade pricing



euromarc
ELITE
MIG WIRE **801**



euromarc
ELITE
MIG WIRE **805**



euromarc
ELITE
TIG WIRE **871**



Solid MIG Wire - ER70S-6

- Mild Steel copper coated wire
- Smooth feed with stable arc performance
- Lower spatter with clean bead finish
- Handles light rust, scale, and dirt
- Suitable for Argon mix or CO2 gases
- 15kg spool

Solid Bronze Coated MIG Wire - ER70S-6

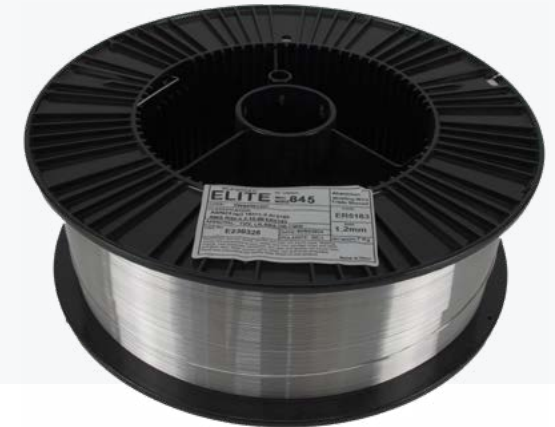
- Precision wound wire for mild and medium strength steels
- Bronze coated surface for cleaner welds and low spatter
- Reduces tip wear and welding fumes
- Smooth feed with consistent arc performance
- Suitable for single and multi pass welding
- 15kg spool

TIG Wire Mild Steel Filler Rod - ER70S-6

- Deoxidised wire for clean, high quality welds
- Excellent mechanical strength, even at low temperatures
- Low hydrogen content for reduced cracking risk
- Consistent weld quality for single and multi pass use
- 1000mm lengths – 5kg packs

Aluminium Wires

Login to order online
& check trade pricing



euromarc
ELITE
TIG WIRE **891**



TIG Wire Aluminium Filler Rod - ER5356

- 5% magnesium alloy for aluminium welding
- Suitable for alloys up to 5% magnesium
- Good strength with strong corrosion resistance
- Reliable performance in marine and structural work
- 1000mm lengths – 2.5kg packs

euromarc
ELITE
MIG WIRE **841**



MIG Wire Aluminium - ER5356 0.5kg | 7kg

- Solid wire for aluminium welding up to 5% magnesium
- Smooth feed with consistent arc performance
- Produces high quality, clean welds
- Strong corrosion resistance for marine use
- Available in 0.5kg or 7kg spools

euromarc
ELITE
MIG WIRE **845**



MIG Wire 1.2mm Aluminium - ER5183

- Magnesium manganese alloy for high strength aluminium welding
- Produces strong, reliable welds
- Good resistance to atmospheric corrosion
- Smooth feed with consistent performance
- 7kg spool

Stainless Steel Wires

Login to order online
& check trade pricing



euromarc®
ELITE
TIG WIRE **881**



Stainless Steel Filler Rod ER308LSi

- For 300 series stainless steels
- Clean, consistent welds
- Low carbon for corrosion resistance
- 1000mm lengths – 5kg packs



euromarc®
ELITE
TIG WIRE **883**



Stainless Steel Filler Rod ER309LSi

- For stainless to carbon steel welding
- Suitable for dissimilar joints
- Resists cracking under heat
- 1000mm lengths – 5kg packs



euromarc®
ELITE
TIG WIRE **885**



Stainless Steel Filler Rod ER316LSi

- For molybdenum stainless steels
- Low carbon for corrosion resistance
- Clean, smooth weld finish
- 1000mm lengths – 5kg packs

euromarc®
ELITE
MIG WIRE **833**



Stainless Steel Wire 1.2mm ER309LSi

- For stainless to carbon steel welding
- Suitable for dissimilar joints
- Resists cracking under heat
- Smooth weld finish
- 12.5kg spool



euromarc®
ELITE
MIG WIRE **835**



Stainless Steel Wire ER316LSi

- For 316 and 316L grade stainless steels
- Higher Si levels result in smooth weld bead shape
- Suitable for wide range of applications including pipe and plate work
- Considered most widely used stainless steel MIG Wire
- 12.5kg spool

MIG Torches

Login to order online
& check trade pricing



Binzel Style Pro 15 MIG Torch

- Air-cooled.
- **Capacity:** 180A CO₂ / 150A Mixed Gas.
- **Wire Range:** 0.8–1.0mm.
- Commonly used for light fabrication.

Features

- Ergonomic design for maximum comfort and grip.
- Hanger hook for easy storage.
- Knuckle joint and cable support for improved movement.
- Euro connection for compatibility with most MIG welders.
- **Compliance:** EN60974-7 Standard.



Binzel Style Pro 24 MIG Torch

- Air-cooled.
- **Capacity:** 250A CO₂ / 220A Mixed Gas.
- **Wire Range:** 0.8–1.2mm.
- Commonly used for light-to-medium fabrication.

Features

- Ergonomic design for maximum comfort and grip.
- Hanger hook for easy storage.
- Knuckle joint and cable support for improved movement.
- Euro connection for compatibility with most MIG welders.
- **Compliance:** EN60974-7 Standard.



Binzel Style Pro 36 MIG Torch

- Air-cooled.
- **Capacity:** 300A CO₂ / 270A Mixed Gas.
- **Wire Range:** 0.8–1.2mm.
- Commonly used for medium-to-heavy fabrication.

Features

- Ergonomic design for maximum comfort and grip.
- Hanger hook for easy storage.
- Knuckle joint and cable support for improved movement.
- Euro connection for compatibility with most MIG welders.
- Available with 4m or 5m leads.
- **Compliance:** EN60974-7 Standard.

Login to order online
& check trade pricing



Binzel Style Pro 501 MIG Torch

- Water-cooled.
- **Capacity:** 520A CO₂ / 430A Mixed Gas.
- **Wire Range:** 0.8–1.2mm.
- Commonly used for heavy fabrication.

Features

- Ergonomic design for maximum comfort and grip.
- Hanger hook for easy storage.
- Knuckle joint and cable support for improved movement.
- Euro connection for compatibility with most MIG welders.
- Available with 4m or 5m leads.
- **Compliance:** EN60974-7 Standard.



Tweco Style Classic No4 MIG Torch

- Air-cooled.
- **Capacity:** 400A CO₂ / 350A Mixed Gas.
- **Wire Range:** 0.8–1.2mm.
- Used for medium-to-heavy fabrication.

Features

- Classic design for durability with innovative improvements for weight and balance.
- Hanger hook for easy storage.
- Knuckle joint and cable support for flexibility and movement.
- Euro connection compatible with most MIG welders.
- Available with a 4.6m (15F) lead.
- **Compliance:** EN60974-7 Standard.



Tregaskiss Style Classic 400 MIG Torch

- Air-cooled.
- **Capacity:** 400A CO₂ / 300A Mixed Gas.
- **Wire Range:** 1.0–1.6mm.
- Used for medium-to-heavy fabrication.

Features

- Classic design for durability with innovative improvements for weight and balance.
- Knuckle joint and cable support for flexibility and movement.
- Euro connection compatible with most MIG welders.
- Available with a 4.6m (15F) lead.
- **Compliance:** EN60974-7 Standard.



FINISH

Wire brushes

Sprays

NDT

Flap Discs

Polishing

General



euromarc
ELITE
CRIMPED
CUP BRUSH **628**



Crimped Cup Brush 628

- Tempered steel wire for smooth, balanced use
- Crimped wire for light rust removal and surface cleaning
- Ideal for flat surfaces, edges, and corners
- M14 thread to suit common angle grinders
- Available in multiple sizes



euromarc
ELITE
FLAP
DISC **101**



Flap Disc 101

- Zirconia grain for consistent cutting and finish
- Wears evenly for longer disc life
- Ideal for edge work and contoured surfaces
- Suitable for steel, stainless steel, and aluminium
- Made in Europe
- Available in grits 40, 60, 80, and 120

Login to order online
& check trade pricing

Sherwin Range

Login to order online & check trade pricing



euromarc
ELITE



Rap-Lock Surface Conditioning Disc

- Removes grinding marks and surface imperfections
- Delivers a consistent, burr free finish
- Non woven design prevents glazing and improves finish
- Quick lock system for fast disc changes
- Suitable for stainless steel and aluminium
- Available in coarse, medium, and fine grades



Black Oxide Magnetic Particle

- Detects cracks and surface defects
- Clear, fast acting indications
- Low background for visibility
- 360° spray valve for easy use
- 400ml Aerosol can



White Contrast Paint

- Creates a high contrast background for inspection
- Improves visibility of test indications
- Fast drying with low odour
- Easy to remove after use
- 400ml Aerosol can



D-100 Developer

- Enhances detection of fine surface flaws
- Draws penetrant to the surface for clear indication
- Thin, even coating for consistent results
- Easy to remove after inspection
- 400ml Aerosol can



DP-50 Dye Penetrant

- Detects cracks and surface defects
- Bright red dye for clear visibility
- Works across a wide temperature range
- Water washable for easy removal
- 400ml Aerosol can



DR-60 Cleaner/Remover

- Removes excess penetrant from surfaces
- Pre cleans parts before inspection
- Fast drying with no residue
- Suitable for general cleaning use
- 400ml Aerosol can

Respiratory



TM1000 Welding Helmet with FreFlow Respirator

- Flip up design for fast switching
- Large 107 x 75 mm viewing area
- True colour lens for clear visibility
- Airflow up to 210 LPM for clean air
- Up to 9 hour battery runtime
- High impact certified protection



TM900 Welding Helmet with FreFlow Respirator

- Lightweight design up to 30% lighter
- Large 107 x 75 mm viewing area with side windows
- True colour lens with 1111 clarity
- Airflow up to 210 LPM for clean air
- Up to 9 hour battery runtime
- Low amp TIG capable down to 2 amps

Login to order online
& check trade pricing

WORKSHOP DEAL PRICING AVAILABLE

Upgrade your teams with BETTER
vision & respiratory protection with
our helmet range.

View our whole
TECMEN range



Ask about multi-buy savings and
total workshop fit-out options

Making it easier for NZ
manufacturers to be competitive.